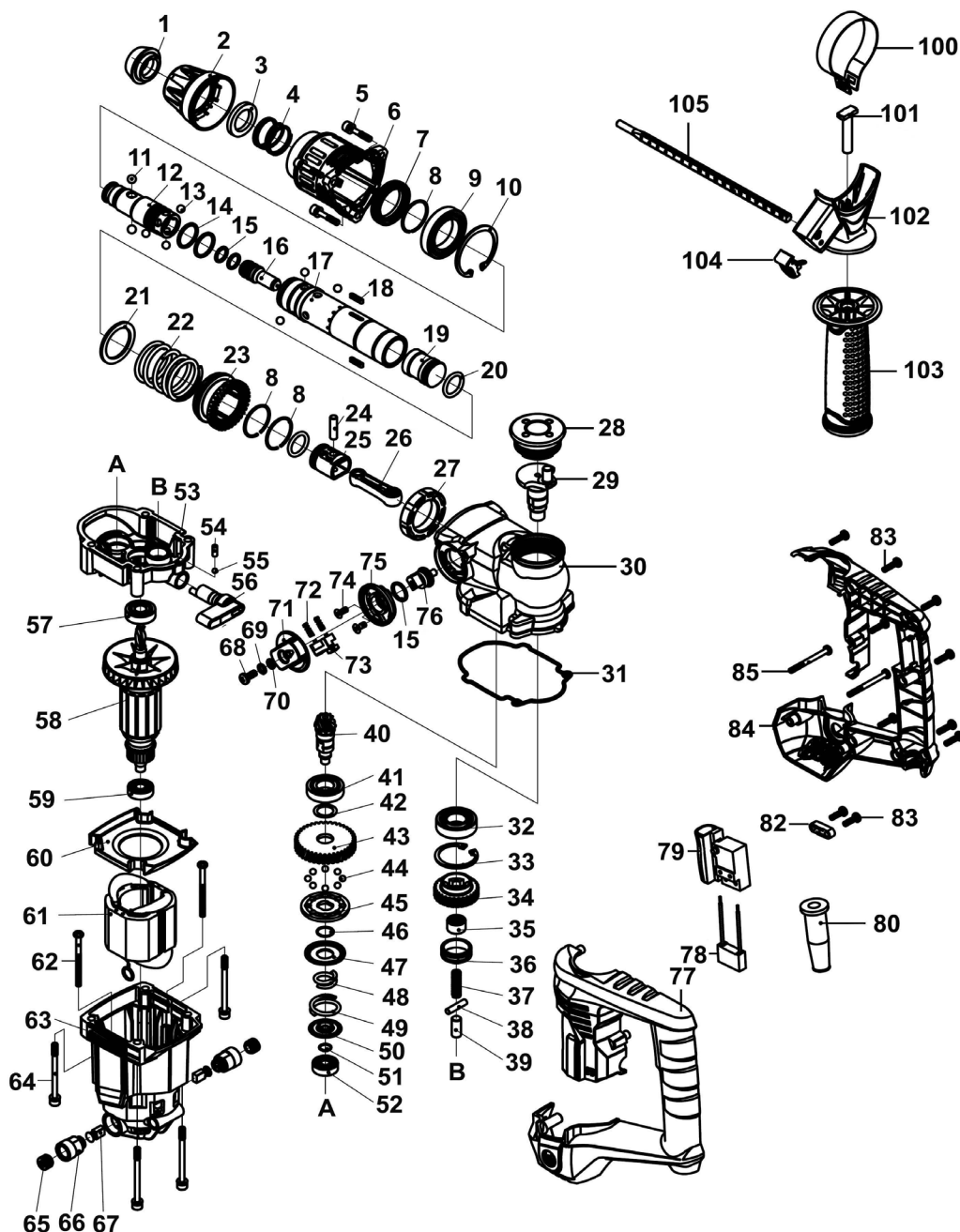


Parts Information: 26mm SDS Plus Rotary Hammer Drill 900W/230V Model No: SDSPLUS26



| Item | Part No. | Description |
|------|--------------|---------------------------------|
| 1 | SDSPLUS26.01 | Front Cover |
| 2 | SDSPLUS26.02 | Steel Ball Rack |
| 3 | SDSPLUS26.03 | Steel Ball Rack Ring |
| 4 | SDSPLUS26.04 | Steel Ball Rack Spring |
| 5 | SDSPLUS26.05 | Self-Tapping Screw 4.8 x 25mm-F |
| 6 | SDSPLUS26.06 | Front Casing |
| 7 | SDSPLUS26.07 | Oil Seal |
| 8 | SDSPLUS26.08 | C-Ring 26.7 x 1.6mm |

| Item | Part No. | Description |
|------|--------------|-------------------|
| 9 | SDSPLUS26.09 | Bearing 61906 |
| 10 | SDSPLUS26.10 | C-Ring 47mm |
| 11 | SB-7.0 | Steel Ball 7.0mm |
| 12 | SDSPLUS26.12 | Rotary Sleeve |
| 13 | SB-6.4 | Steel Ball 6.4mm |
| 14 | SDSPLUS26.14 | O-Ring 19.8 x 2mm |
| 15 | SDSPLUS26.15 | O-Ring 11 x 2mm |
| 16 | SDSPLUS26.16 | Impact Hammer |

NOTE: It is our policy to continually improve products and as such we reserve the right to alter data, specifications and component parts without prior notice. There may be alternative versions of this product, please contact us should you require this information.

IMPORTANT: No liability is accepted for incorrect use of product. Spare parts must be fitted by a competent person

WARRANTY: Guarantee is 12 months from purchase date, proof of which will be required for any claim.

Jack Sealey Ltd t/a Sealey Group, Kempson Way, Suffolk Business Park, Bury St Edmunds, Suffolk, IP32 7AR UK

Jack Sealey (EU) Ltd t/a Sealey Group, Farney Street, Carrickmacross, Co. Monaghan, A81 PK68 Ireland

Tel: 01284 757500 • Email: sales@sealey.co.uk • Web: www.sealey.co.uk



TM

Parts Information:

26mm SDS Plus Rotary Hammer Drill

900W/230V

Model No: SDSPLUS26

| Item | Part No. | Description |
|------|--------------|---------------------------------------|
| 17 | SDSPLUS26.17 | Cylinder |
| 18 | SDSPLUS26.18 | Cylinder Key A3 x 3 x 18mm |
| 19 | SDSPLUS26.19 | Front Impact |
| 20 | SDSPLUS26.20 | O-Ring 18 x 3.05mm |
| 21 | SDSPLUS26.21 | Spring Washer |
| 22 | SDSPLUS26.22 | Front Impact Spring |
| 23 | SDSPLUS26.23 | Gear, Large |
| 24 | SDSPLUS26.24 | Piston Pin |
| 25 | SDSPLUS32.33 | Piston |
| 26 | SDSPLUS32.34 | Connecting Rod |
| 27 | SDSPLUS26.27 | Oil Bearing |
| 28 | SDSPLUS26.28 | Oil Seal Cover |
| 29 | SDSPLUS26.29 | Work Spindle |
| 30 | SDSPLUS26.30 | Gearbox |
| 31 | SDSPLUS26.31 | Gearbox Seal |
| 32 | B/6003ZZ | Bearing 6003ZZ |
| 33 | SDSPLUS26.33 | External Circlip ID: 35mm |
| 34 | SDSPLUS26.34 | Gear 1st |
| 35 | B/HK1210 | Needle Bearing HK1210 |
| 36 | SDSPLUS26.36 | Support Sleeve |
| 37 | SDSPLUS26.37 | Top Hammer Spring Ø8mm |
| 38 | SDSPLUS26.38 | Round Pin |
| 39 | SDSPLUS26.39 | Top Hammer |
| 40 | SDSPLUS26.40 | Gear, Small |
| 41 | B/16002ZZ | Bearing 16002ZZ |
| 42 | SDSPLUS26.42 | Gear Washer, Small |
| 43 | SDSPLUS26.43 | Gear 2nd |
| 44 | SB-5.0 | Steel Ball 5.0mm |
| 45 | SDSPLUS26.45 | Safety Clutch Plate A |
| 46 | SDSPLUS26.46 | C-Ring 12.5 x 1mm |
| 47 | SDSPLUS26.47 | Safety Clutch Plate B |
| 48 | SDSPLUS26.48 | Safety Clutch Internal Spring 15.4mm |
| 49 | SDSPLUS26.49 | Safety Clutch External Spring Ø32.2mm |
| 50 | SDSPLUS26.50 | Safety Clutch Spring Seat |
| 51 | SDSPLUS26.51 | C-Ring 8.8 x 1mm |
| 52 | B/627ZZ | Bearing 627ZZ |
| 53 | SDSPLUS26.53 | Middle Cover |
| 54 | SDSPLUS26.54 | Rubber Pin |

| Item | Part No. | Description |
|------|-----------------|-----------------------------------------------------------------|
| 55 | SB-4.0 | Steel Ball 4.0mm |
| 56 | SDSPLUS26.56 | Lever, Function Selection, Plastic 5 x 10mm Offset Male Fitting |
| 57 | B/6000-2RS | Bearing 6000-2RS |
| 58 | SDSPLUS26.58 | Rotor |
| 59 | B/608ZZ | Bearing 608ZZ |
| 60 | SDSPLUS26.60 | Guide Ring |
| 61 | SDSPLUS26.61 | Stator |
| 62 | SDSPLUS26.62 | Self-Tapping Screw 4 x 55mm |
| 63 | SDSPLUS26.63 | Housing |
| 64 | SDSPLUS26.64 | Self-Tapping Screw 4.8 x 60mm-F |
| 65 | SDSPLUS26.65 | Carbon Brush Cover |
| 66 | SDSPLUS26.66 | Carbon Brush Holder |
| 67 | SDSPLUS26.67 | Carbon Brush (Pair) (14.15 x 7.9 x 4.85 x 36.1mm) |
| 68 | SDSPLUS26.68 | Screw for Button |
| 69 | SWM4.SB | Spring Washer M4 Black |
| 70 | FWM4.SB | Flat Washer M4 Black |
| 71 | SDSPLUS26.71 | Switch Button |
| 72 | SDSPLUS26.72 | Spring Ø4mm |
| 73 | SDSPLUS32.43 | Button, Red Plastic |
| 74 | SDSPLUS26.74 | Self-Tapping Screw 4 x 9.5mm-F |
| 75 | SDSPLUS26.75 | Switch Button Base |
| 76 | SDSPLUS26.76 | Switch Button Base Support |
| 77 | SDSPLUS26.77 | Handle, Left Side |
| 78 | SDSPLUS26.78 | Capacitor 0.22µF |
| 79 | SDSPLUS26.79 | Switch |
| 80 | SDSPLUS26.80 | Cable Sleeve |
| 82 | SDSPLUS26.82 | Cable Grip |
| 83 | SDSPLUS26.83 | Self-Tapping Screw 4 x 16mm-F |
| 84 | SDSPLUS26.84 | Handle, Right Side |
| 85 | SDSPLUS26.85 | Self-Tapping Screw 4 x 45mm-F |
| 100 | SDSPLUS26.S-100 | Auxiliary Handle Clamp Ring |
| 101 | SDSPLUS26.S-101 | T-Bolt for Auxiliary Handle |
| 102 | SDSPLUS26.S-102 | Auxiliary Side Handle Bracket |
| 103 | SDSPLUS26.S-103 | Auxiliary Side Handle |
| 104 | SDSPLUS26.S-104 | Depth Gauge Ruler Button |
| 105 | SDSPLUS26.S-105 | Depth Gauge Ruler |
| -- | SDSPLUS26-SC | Storage Case (Not Shown) |

NOTE: It is our policy to continually improve products and as such we reserve the right to alter data, specifications and component parts without prior notice. There may be alternative versions of this product, please contact us should you require this information.

IMPORTANT: No liability is accepted for incorrect use of product. Spare parts must be fitted by a competent person

WARRANTY: Guarantee is 12 months from purchase date, proof of which will be required for any claim.

Jack Sealey Ltd t/a Sealey Group, Kempson Way, Suffolk Business Park, Bury St Edmunds, Suffolk, IP32 7AR UK

Jack Sealey (EU) Ltd t/a Sealey Group, Farney Street, Carrickmacross, Co. Monaghan, A81 PK68 Ireland

Tel: 01284 757500 • **Email:** sales@sealey.co.uk • **Web:** www.sealey.co.uk